

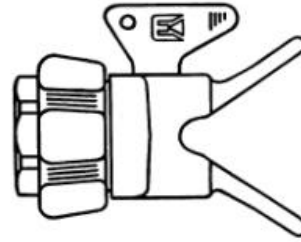


SELF-CLEANING AIRLESS SPRAY NOZZLE ASSEMBLY

605-93/2

BLAST-A-WAY®
MK II *Speedy*

2



WARNING - FLUID INJECTION HAZARD

- ⇒ NEVER remove or cut off the tip guard
- ⇒ NEVER put hands or fingers in front of spray nozzle
- ⇒ NEVER point a spray gun at any part of your body or anyone else.
- ⇒ NEVER leave the gun unattended when not in use.
- ⇒ ALWAYS release pressure and apply safety trigger lock (fig.7).

FEATURES

- ⇒ Fits all popular airless spray guns.
- ⇒ Low friction turning
- ⇒ Quick cylinder change by hand without tools.
- ⇒ Hand tightened seal system
- ⇒ Assembly suitable for solvent and waterbound paints.
- ⇒ Maximum working pressure: **400 bar, 5800 PSI**

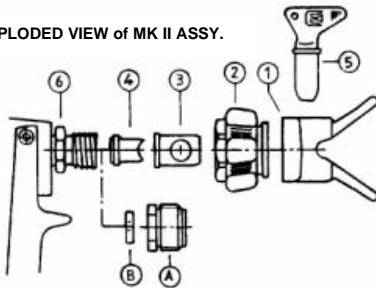


TYPE OF AIRLESS GUN USED	GRACO SPEEFLO TITAN	DEVILBISS KREMLIN MERCURY SEARS	BINK'S 505	BÖLLHOFF DETE ECCO FINISHING KRAUTZBERGER	ASAHI IWATA SEIWA	AIRLESSCO ASTURO HÜBNER LARIUS TAIVER WAGNER WWA
TYPE OF THREADS LAST DIGIT CODES	7/8x14 2	3/8 NPS 3	3/4x20 4	M18x1 5	M18x1,5 6	11/16x16 7

DESCRIPTION & REFERENCES

1,2,3,4, A & B	Complete unit inc pre adaptor	-	88-243	-	-	-	88-247
1,2,3 & 4	Complete unit MK II	88-262	88-263	88-264	88-265	88-266	88-267
1	Safety guard	88-061	88-061	88-061	88-061	88-061	88-061
2	Adapter	88-052	88-057	88-054	88-055	88-056	88-057
3	Housing St.St.	88-060	88-060	88-060	88-060	88-060	88-060
4	Seal kit.	88-063	88-063	88-063	88-063	88-063	88-063
A + B	Pre-Adapter + Gasket	-	88-023	-	-	-	88-027

EXPLODED VIEW of MK II ASSY.



BASE UNITS

- 88-262 Base unit fits 7/8 x 14
- 88-243 Base unit fits 3/8 NPS
- 88-264 Base unit fits 3/4 x 20
- 88-265 Base unit fits M18 x 1
- 88-266 Base unit fits M18 x 1.5
- 88-247 Base unit fits 11/16 x 16

SPRAY TIPS

- 88-010 Standard tip
- 88-020 SF Superfine tip

IMPORTANT NOTE

QUANTITY DISCOUNTS ARE AVAILABLE

10+ LESS 10% 30+ LESS 15%

SPARE PARTS

- 88-061 Safety guard
- 88-052 Adaptor
- 88-054 Adaptor
- 88-055 Adaptor
- 88-056 Adaptor
- 88-057 Adaptor
- 88-060 Housing stainless
- 88-063 Swivel seal assembly
- 88-023 Pre-adaptor 3/8 NPS F – 7/8 x 14 M
- 88-027 Pre-adaptor 11/16x16 F – 7/8 x 14 M
- 21-008 Gasket

